

B.M.A. College, Baheri, Darbhanga

Dr. Mahesh Prasad Yadav  
Dept of zoology  
subject - Biology  
class - XI

Date 16.09.2020

Topic : → Excretory products and their  
- Elimination

© Tubular secretion

Peritubular capillaries -

- Network

→ PCT, DCT and collecting duct

(i) gn PCT Maximum

→  $K^+$ ,  $H^+$ ,  $NH_3^+$

Hippuric acid

(creatinine, degraded drugs urea, uric acid etc.

(ii) gn DCT

$K^+$ ,  $H^+$ ,  $NH_3^+$

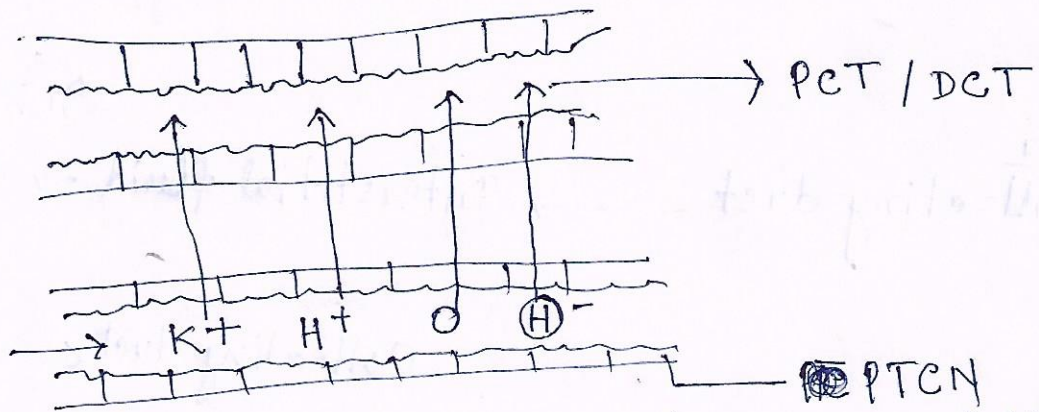
(iii) gn collecting duct

$H^+$ ,  $K^+$

R Aglomerular kidney

→ ultrafiltration absent

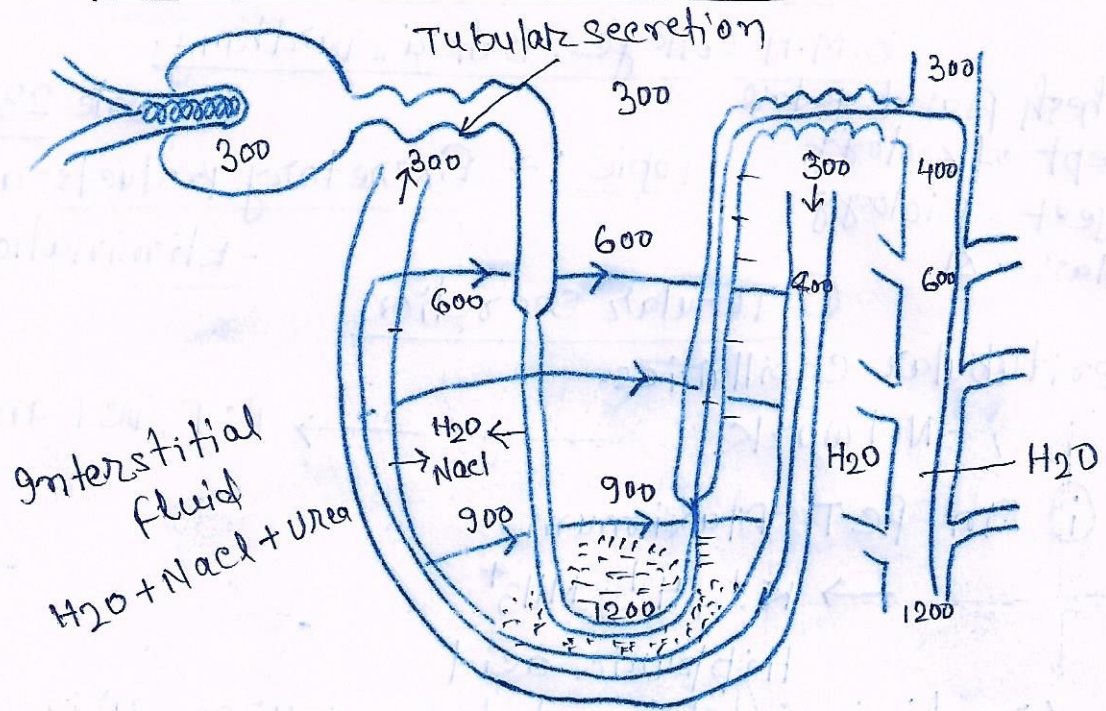
Tubular secretion



Agglomerular kidney

→ ultrafiltration absent  
Tubular secretion present

Counter Current Mechanism : →



Circulation of salt and circulation of urea maintain the interstitial fluid concentration so at least there is a continuous loss of water from the collecting duct. Urine become 4 times concentrated.

