

Dr. Mahesh Prasad Yadav
Department of Zoology
Subject - Zoology (Biology)
Class - XI

Date: 23.09.2020

ANIMAL CELL

Nucleus :-> The following structure are associated with nucleus.

(i) Nuclear membrane :-> Nuclear membrane are surround the nucleus and is formed by two layers. Each layer are formed by protein and lipid. Nuclear membrane has small nuclear pore through the exchange of material takes place between the nucleus and cytoplasm. The outer layer is connected with endoplasmic reticulum.

(ii) Nucleoplasm :-> The protoplasm found in the nucleus and consists of protein, phosphorus and nucleic acid.

(iii) Nucleolus :-> within the nucleus are found one or more rounded like structure. This can be divided into four parts (i) matrix (ii) pars fibrosa (iii) pars granulosa

(iv) Pars Chromatid

Function of Nucleolus :-> (i) RNA is synthesized in nucleolus
(ii) Nucleolus helps to transfer RNA formed in nucleus
(iii) Ribosome accumulate here.

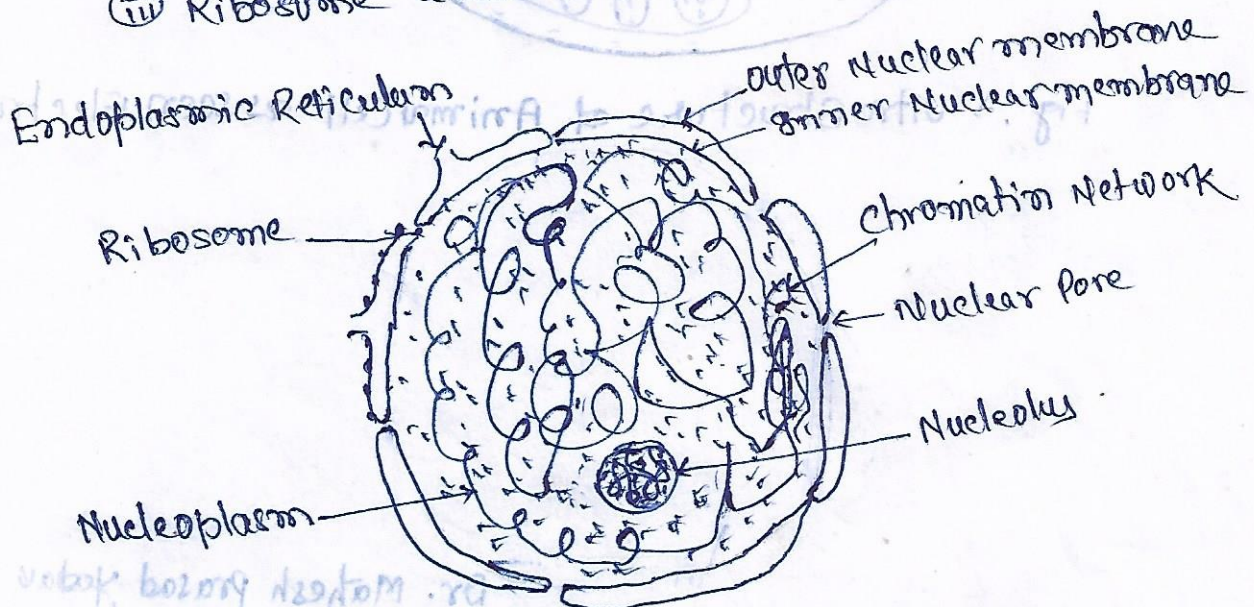


Fig: Structure of Nucleus

chromatin ; → In the nucleus a deeply staining substance present in the nucleus of a cell contains the genetic-material.

chromosome ; → A thread like structure in the nucleus of a cell that transmits the hereditary characters to the offspring.

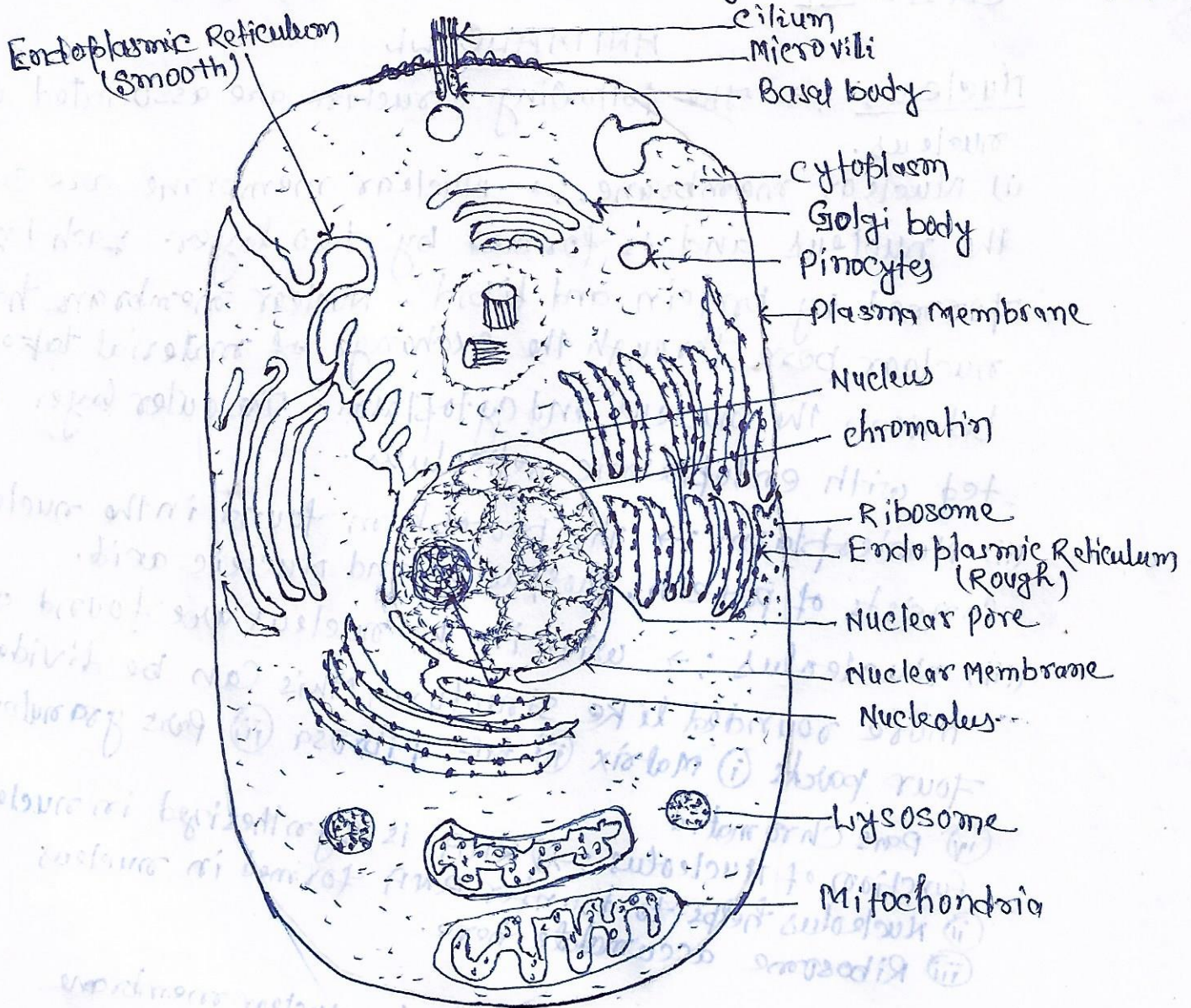
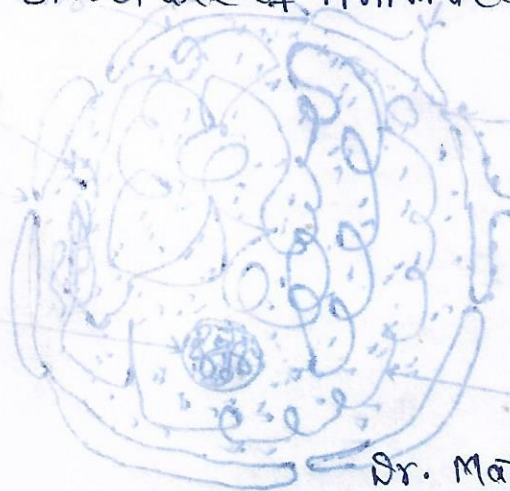


Fig ; → Ultra Structure of Animal Cell as seen Electron microscope



Dr. Mahesh Prasad Yadav
 Department of Zoology
 B.M.A. College, Baheri, Darbhanga