

B.M.A. College, Baheri, Darbhanga

Dr. Mahesh Prasad Yadav

Date: 30-07-2020

Deptt. of Zoology

Subject - Biology (Zoology)

Topic: DIGESTION AND ABSORPTION

Class - XI

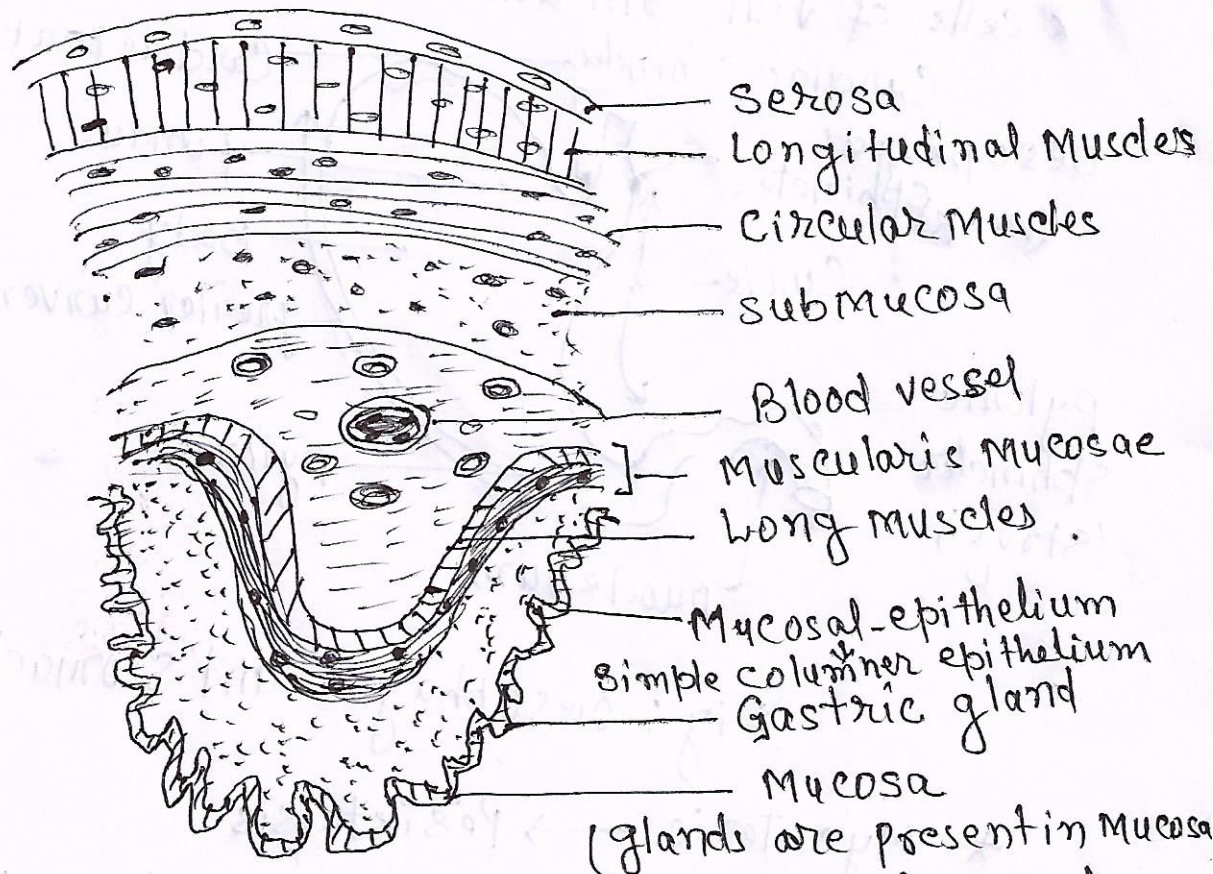
Anatomy and histology of Alimentary canal

Fig: Anatomy and histology of Alimentary canal (Stomach)

- * Tunica Adventia: - outer most layer of oesophagus instead of serosa.
- * Skeletal muscles: - are found in upper part one third part of oesophagus
- * oblique muscles: - are found in stomach below the circular muscles. It helps in mechanical digestion.
- * Mucosa: - innermost layer and includes the glandular tissue.
- * Non keratinized epithelium: - It is found in oesophagus instead of columnar epithelium.
- * Brunner gland: - are found in submucosa of duodenum.

It secreted alkaline mucosae.

Digestive glands → secretion of digestive juice

Mucosa :- are formed of Columnar cells.
innermost layer of intestine.

* Finger like projection on mucosa fold in villi

* cells of villi contains microvilli

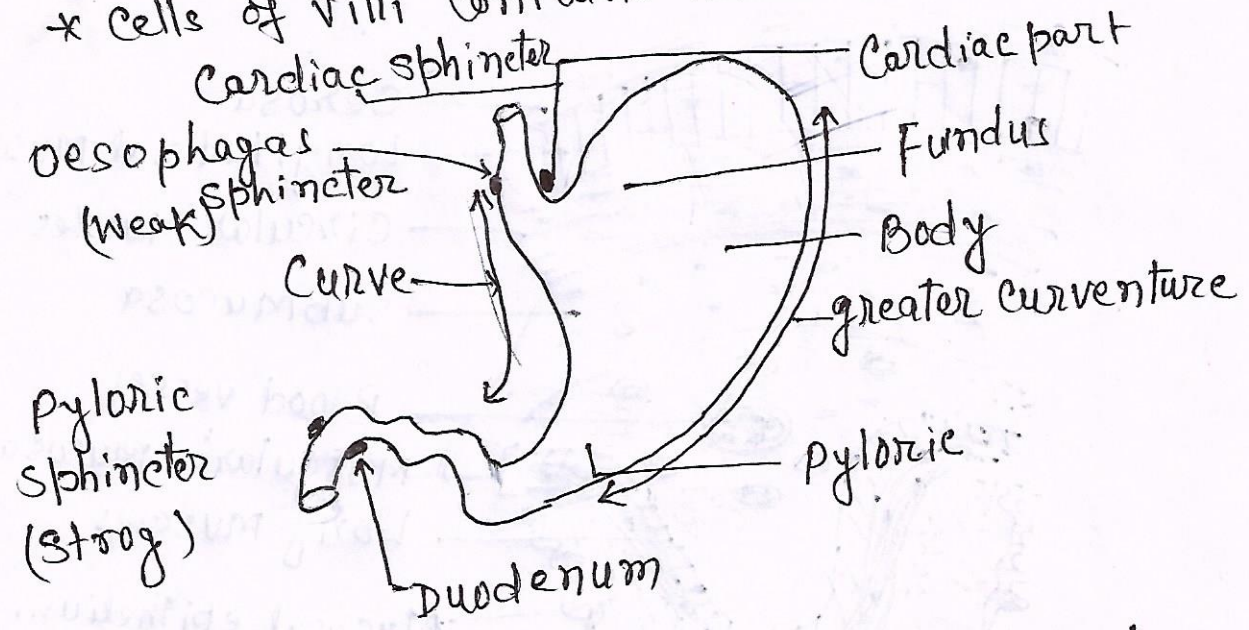


Fig: oesophagus and stomach

* Myenteric → Peristalsis

* Meissner plexus → secretion of digestive enzymes

Stomach

→ mucosal fold - Rugae

→ gastric gland

