

B.M.A. College, Baheri, Darbhanga

Dr. Mahesh Prasad Yadav

Date 22.07.2020

Dept. of Zoology

Topic → Body Fluid and Circulation

Class - XI

Subject - Biology

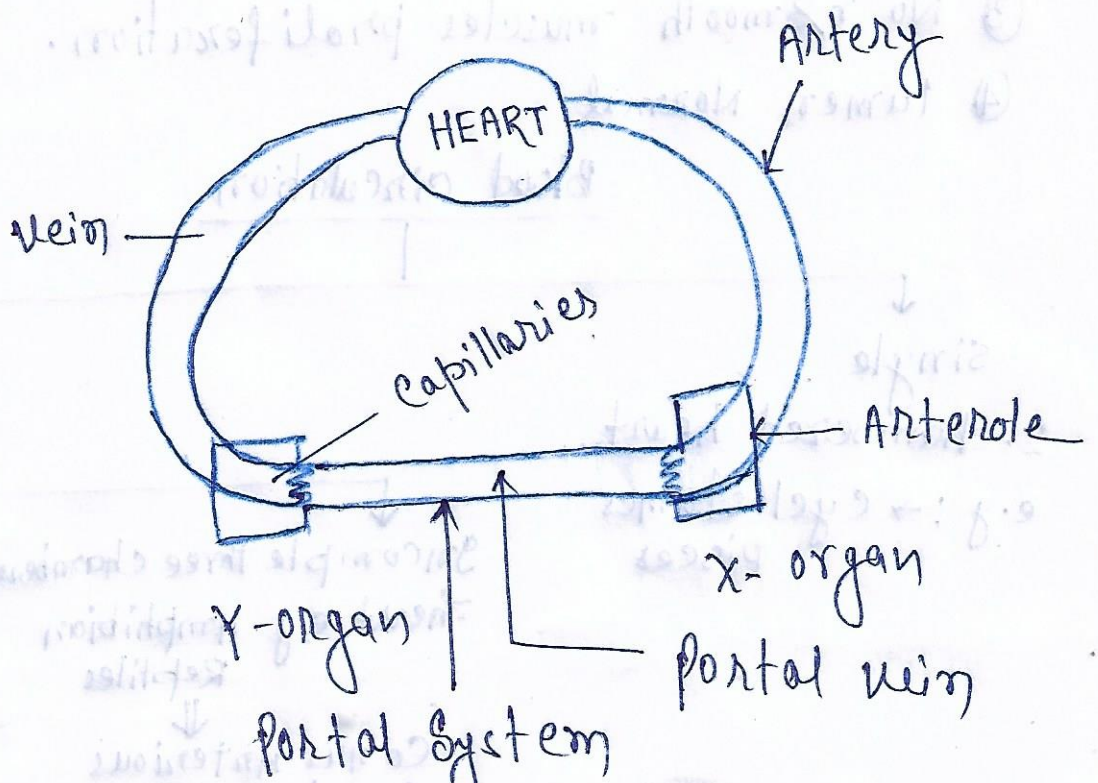
Portal system

Portal System : → The system originates in form of capillaries and terminates in form of capillaries (organ to organ)

e.g :- Hepatic portal system  
[Between intestine and Liver]

Renal portal system  
[Lower body part and Kidney]  
e.g. Fishes and Amphibian

Hypophyseal portal system  
[Hypothalamus and Anterior pituitary]



# Body fluid and circulation

⇒ Capillary is made up of Tunica interna

## Atherosclerosis

- ① It is due to deposition of lipid [cholesterol] in large and medium size arteries
- ② plaque formation present
- ③ smooth muscles proliferates
- ④ lumen narrow

## Arteriosclerosis

- ① It is due to deposition of cholesterol and calcium in medium and small size artery.
- ② No plaque formation
- ③ No smooth muscles proliferation.
- ④ lumen Normal

## Blood circulation

